

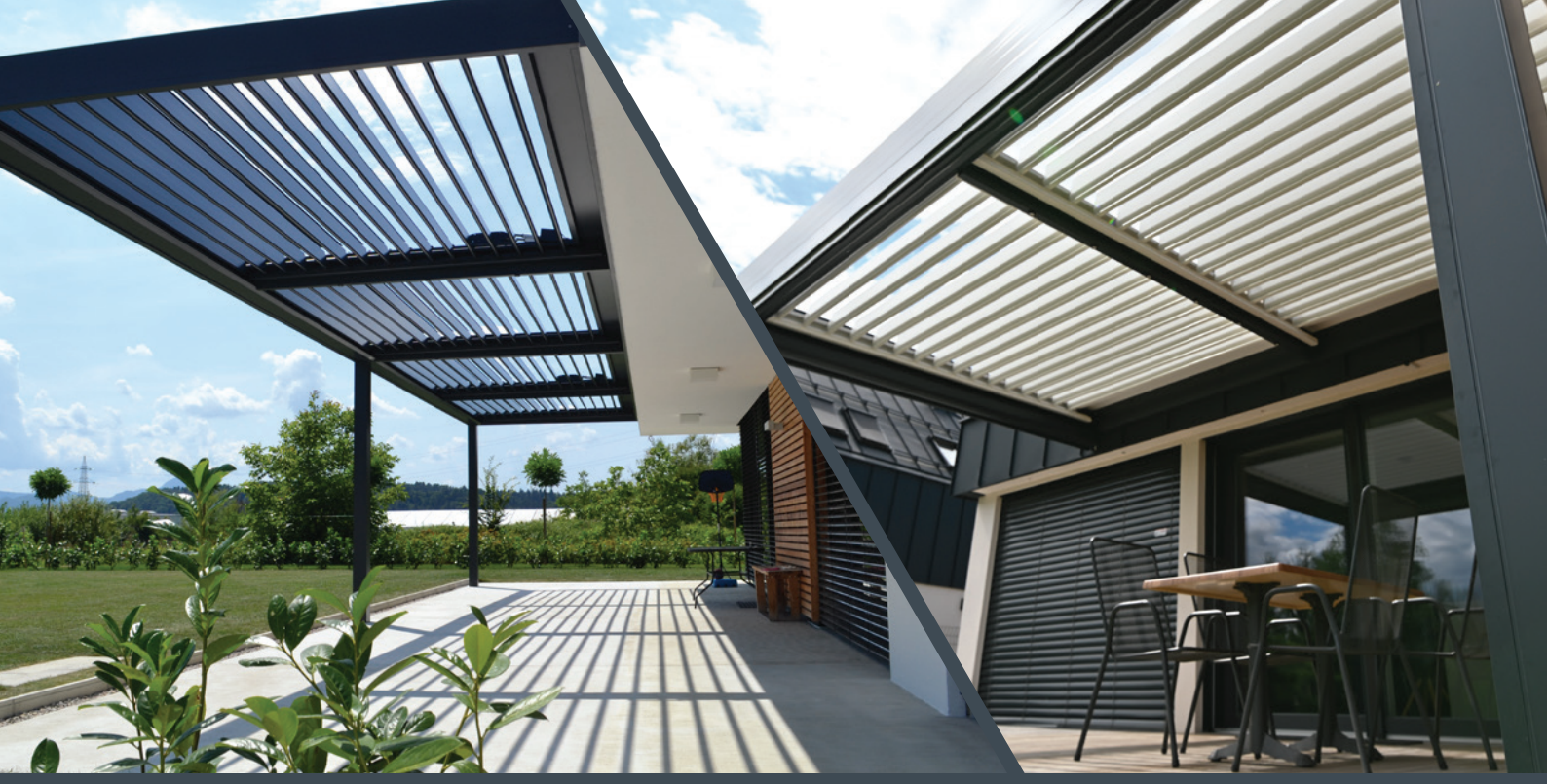


SOLISYSTEME®

Experience *the Most* with Bioclimatic Pergola



misteral



Luxury Hotel Riva, Island of Krk, Croatia



Creators of Bioclimatic Pergolas

Bioclimatic pergolas can be adjusted to every architectural feat - existing facility, new **construction** or **renovation**. Our pergolas are strong and aesthetically perfected (optimal balance between strength and statics, carried out for each pergola separately). Their primary purpose is to protect your terrace, while creating a new **living space outside your home**.

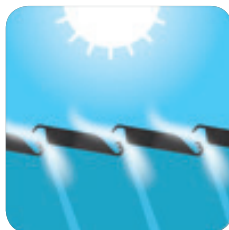
Bioclimatic Concept

The Bioclimatic Pergola is an original and exclusive concept that provides you with an **entirely new living space**. You can regulate temperature, shade or light based on your wishes and current needs.



PROTECTION

Protection from the sun and inclement weather



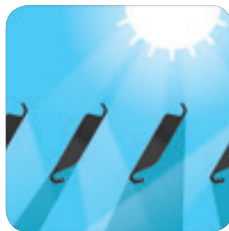
VENTILATION

Natural ventilation



REGULATION

Regulates the temperature in the adjoining room



BRIGHTNESS

Brightness control



The producer of pergolas **SOLISYSTEME** (exclusive representative for Slovenia: **Mistral d.o.o.**) has acquired the reputation of a leading development company in the field of pergolas. **Mistral Pergola** offers innovative solutions for the optimization and extension of your outdoor living space whatever the weather or season.

Play with light and shade



Rainwater drainage tested up to 230 mm/hour (CSTB)



Wind resistance tested up to 180 km/hour (CSTB)



Load resistance tested up to 300 kg/m² (APAVE) - depending on dimension

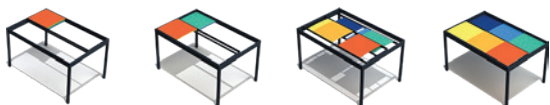
- Customized aluminium construction
- Manually or power-operated
- Compatible with all our accessories (ZIP roller blinds, lights, heaters)
- Horizontal or sloped structures are possible
- Can be integrated into existing constructions (wood, aluminium, steel ...)



Change the colour of the weather

The latest addition to the MISTERAL pergola range is the **unique and fun Arlequin panel pergola**, which offers the possibility of instant creative decisions and changes in the functions of pergola.

The shape is simple and efficient: the frames and panels can be moved as desired - manually. Open completely by gathering the frames and panels or close completely by rolling them all out.

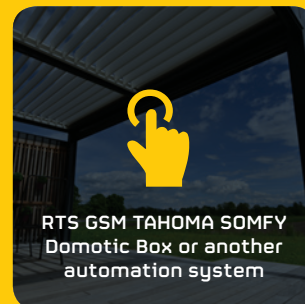


- Manual operation
- Possibility of choosing different materials for coloured panels
- Wide range of colours (22 colours for aluminium panels and 19 colours for canvas panels)



Options and accessories

The accessories compatible with all our pergolas are anything but incidental.



With our multiple possibilities of personalization, enjoy your terrace every day of the year, whatever the season.

Enjoy under the most elegant pergola

With its clean lines and unique design, Elegance pergolas create a genuine living space, day and night.

The Elegance finish is a **fully customizable construction that suits even the most demanding tastes**. It offers the possibility of integrating the signboard of your company/product. Completely redesigned, luxurious and fully customizable.

- » Hidden closures and fasteners
 - » Technical posts for the integration of electronic boxes and automation systems
 - » Compatible with Mistral Bioclimatic and Arlequin Pergola
 - » Compatible with all our accessories





Our unique **KEY** strengths:

- » **waterproof** pergolas,
- » our louvres feature special **grooves for collecting water** (therefore you can open the louvres in the morning after dew or rain without any water dripping),
- » patented **drainage solutions**,
- » the only pergola worldwide with **officially tested waterproofness** of 230 mm/hour,
- » the only pergola on the market with a **mobile gutter** (no water spraying in case of heavy rainfall),
- » the only pergola on the market with **up to 10-year warranty**,
- » **snow-bearing pergola** (snow-bearing strength depends on the dimension of pergola, your wishes and needs),
- » our pergolas are **without any seals between the louvres**, which age over time and become rigid,
- » we use only solutions that have been **tried and tested** at official institutes - without any improvisations!
- » wind resistance of bioclimatic pergolas **up to 180 km/h**,
- » **the largest louver rotation angle** on the market, up to 160°.

Our supplier is the holder of the initial patent for bioclimatic pergolas, which they obtained **more than 20 years ago**, we have more than **12000 references all around the world**, in all weather conditions.

All our aluminium profiles conform to the Qualicoat and Qualimarine standards. These standards ensure a **long life cycle** and a perfect processing of the product, which is supported also by **long-time warranty**.

All our pergolas and constructions have been tested by a lab simulation of extreme weather conditions in order to ensure the **maximum reliability, durability and functionality** of our bioclimatic and panel pergolas.

 **MISTRAL D.O.O.**
Zdolska cesta 18a
8270 Krško, Slovenija

t +386 41 659 659
e info@mistral.si
mistral.si

bioclimatic-pergola-mistral.com

  PergolaMistral

 **SOLISYSTEME®**